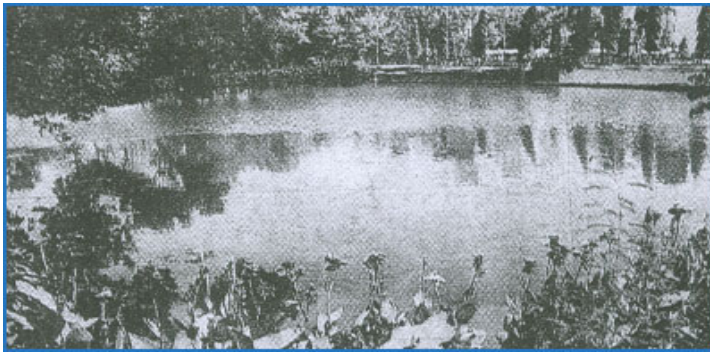


From Wasteland to blooming landscape

Geetanjali Patole, TNN.

DNL have transformed a chemical wasteland into a picturesque garden, with lilies and an artificial lake.

In between constantly striving to retain their position as the leading manufacturers of inorganic and aromatic fine chemicals. Deepak Nitrite Limited seems to be looking at a new long-term investment. Ensuring that the company receives maximum returns through the optimal care for the environment, DNL recently inaugurated a picturesque landscape garden situated amidst their Effluent Treatment Plant (ETP) at Parvati, Vithalvadi Road. The inauguration which coincided with World Environment Day (June 5) also saw a list of local dignitaries including B. S. Zagade, Deputy Commissioner, Pune Municipal



Corporation and Bharat Nimbarete, regional officer, Maharashtra Pollution Control Board, attend the function.

However what is most commendable about the two and a half acre project taken up by DNL more than two years ago, is overcoming the difficult task of growing vegetation on an once

declared chemical wasteland. The near impossible feat which required careful cleansing of the soil, along with the treatment of water through various stages, now stands as a unique example for others to follow.

The state-of-the-art Effluent Treatment Plant (ETP), which has been set up for the physio-chemical and biological treatment of effluents, also ensures that the products are manufactured in the most eco-friendly manner. Besides the ETP, DNL also boasts of a state-of-the-art R&D Department, which is constantly looking at developing newer methods to treat chemical wastes. The ISO 9000 company also boasts of an environment cell, which constantly monitors the pollution control equipment. At present the ETP treats close to 100,000 litres of water everyday.

Out of the many gardens developed by DNL, their plants at Roha, Talaja and Baroda have also raked in enough praise. The charming picture in Pune is complete with an artificial lake surrounded by water lilies and a spray of summer blossoms. The joggers' path neatly criss-crosses the landscape, while towering eucalyptus trees and asokas surround the neatly cultivated land.

Says Satish Shah, Vice President Operations, "When we first took up the idea, it was received with a lot of skepticism. People found it impossible to believe that this kind of

land could actually bear plant growth. However, over the next two years, we dug up the area and filled the pits with new soil. We made it a point to use the treated water from the ETP for cultivation, so that people could get rid of the mind-set that the water treated at ETP is high on chemical content. Predictably, the area flourished and today is a preferred picnic spot by the employees of DNL."